



Building with conscience.

# StoColor<sup>®</sup> Lotusan<sup>®</sup>

Super-hydrophobic Exterior Coating with Lotus-Effect<sup>®</sup> Technology

Facades



StoColor<sup>®</sup> Lotusan<sup>®</sup> coating with Lotus-Effect<sup>®</sup> Technology keeps buildings' facades clean and attractive while saving money on maintenance and recoating.





# StoColor® Lotusan®

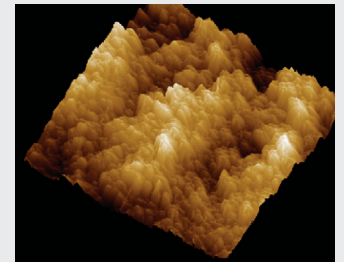
Modeled on nature and the self-cleaning properties of the Lotus Leaf.

Dirt particles are unable to obtain a hold on the leaves of the lotus plant and simply flow off with the rain droplets that fall on the plant. StoColor® Lotusan® exterior coating possesses a highly water-repellent surface similar to that of the lotus leaf. Its microstructure has been modeled on the lotus plant to minimize the contact area for water and dirt. The surface additionally offers enhanced hydrophobic properties.

Lotus-Effect® Technology: Dirt simply runs off with the water that falls on the facade. The facade remains dry and attractive. Even on sides which are particularly exposed to the weather.

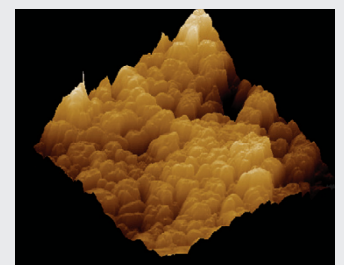
## Facade protection featuring a pronounced self-cleaning effect.

- Very high level of water- and dirt-repellence after drying of the coating.
- Highly resistant to soiling, pronounced self-cleaning effect.
- Resists the growth of mold, mildew, and algae.
- Excellent weather and chalk resistance, UV-stable.
- Ideal for new construction and recoat projects over concrete, stucco, EIFS, and fiber cement board and primed or pre-painted wood substrates.
- High water vapor permeability.
- Smooth matte (flat) surface.
- Can be recoated with traditional acrylic based paints, though with the loss of the self cleaning properties of the Lotus-Effect® technology.



The microstructure of a lotus leaf magnified 7,000 times:

The nanoscopic photograph shows the extremely reduced contact area for water and dirt. As the surface is also highly water-repellent, water immediately forms droplets and flows off, taking dirt particles on the surface with it.



The microstructure of StoColor Lotusan magnified 7,000 times:

The beauty of Lotus-Effect® Technology: Virtually identical to the lotus leaf. Sto's development engineers have additionally enhanced the surface's hydrophobic properties. Dirt on StoColor Lotusan facades is consequently carried away immediately by the water which falls on the surface.





Features	Benefits
<b>Super-hydrophobic</b>	<ul style="list-style-type: none"> <li>• Extremely water repellent</li> <li>• Outstanding resistance to soiling issues</li> <li>• Improved resistance to mold, mildew and algae</li> </ul>
<b>Vapor Permeable</b>	Allows substrate to breathe naturally, resists blisters caused by trapped water vapor
<b>UV Resistant</b>	Excellent color retention

StoColor® Lotusan® lowers maintenance costs by extending cleaning and recoating cycles.



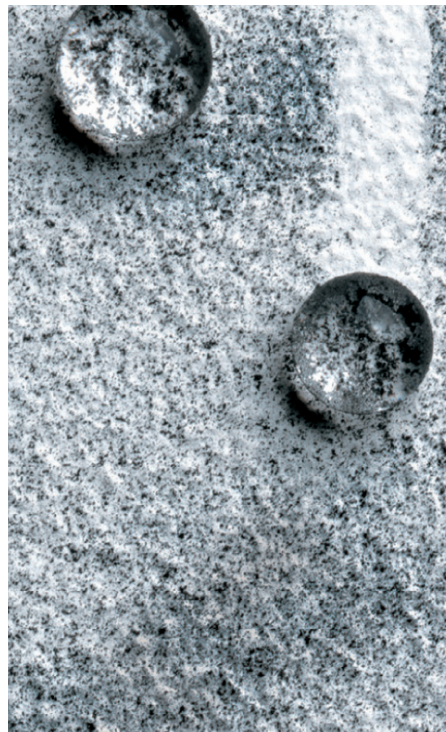
StoColor® Lotusan® is available in many colors within the StoColor System.



StoColor® Lotusan® enables simple, seamless application.



Before



After

The problem with conventional exterior paints: The soiling of the facade becomes increasingly visible over time. On weather exposed sides in particular, microorganisms find an ideal environment for colonization in the form of adequate moisture and nutrients from dirt deposits.

The Lotus-Effect® Technology provides super-hydrophobic properties on the facade. Water and dirt flow off immediately leaving the facade dry and attractive.





Images © 2016, James Steinkamp Photography

**Sto Americas**

**Sto Corp.**  
 3800 Camp Creek Pkwy  
 Building 1400, Suite 120  
 Atlanta, GA 30331  
 USA

Phone 1-800-221-2397  
[www.stocorp.com](http://www.stocorp.com)

**ATTENTION**

Sto products are intended for use by qualified professional contractors, not consumers, as a component of a larger construction assembly as specified by a qualified design professional, general contractor or builder. They should be installed in accordance with those specifications and Sto's instructions. Sto Corp. disclaims all, and assumes no, liability for on-site inspections, for its products applied improperly, or by unqualified persons or entities, or as part of an improperly designed or constructed building, for the nonperformance of adjacent building components or assemblies, or for other construction activities beyond Sto's control. Improper use of Sto products or use as part of an improperly designed or constructed larger assembly or building may result in serious damage to this product, and to the structure of the building or its components. **STO CORP. DISCLAIMS ALL WARRANTIES EXPRESSED OR IMPLIED EXCEPT FOR EXPLICIT LIMITED WRITTEN WARRANTIES ISSUED TO AND ACCEPTED BY BUILDING OWNERS IN ACCORDANCE WITH STO'S WARRANTY PROGRAMS WHICH ARE SUBJECT TO CHANGE FROM TIME TO TIME.** For the fullest, most current information on proper application, clean-up, mixing and other specifications and warranties, cautions and disclaimers, please refer to the Sto Corp. website, [www.stocorp.com](http://www.stocorp.com).